

1. BATTERY PARAMETERS

Type - Li-ion

Voltage - 3.7V

Capacity - 5000 mAh

Size - 706090 (92*60*7mm)

Connector and polarity

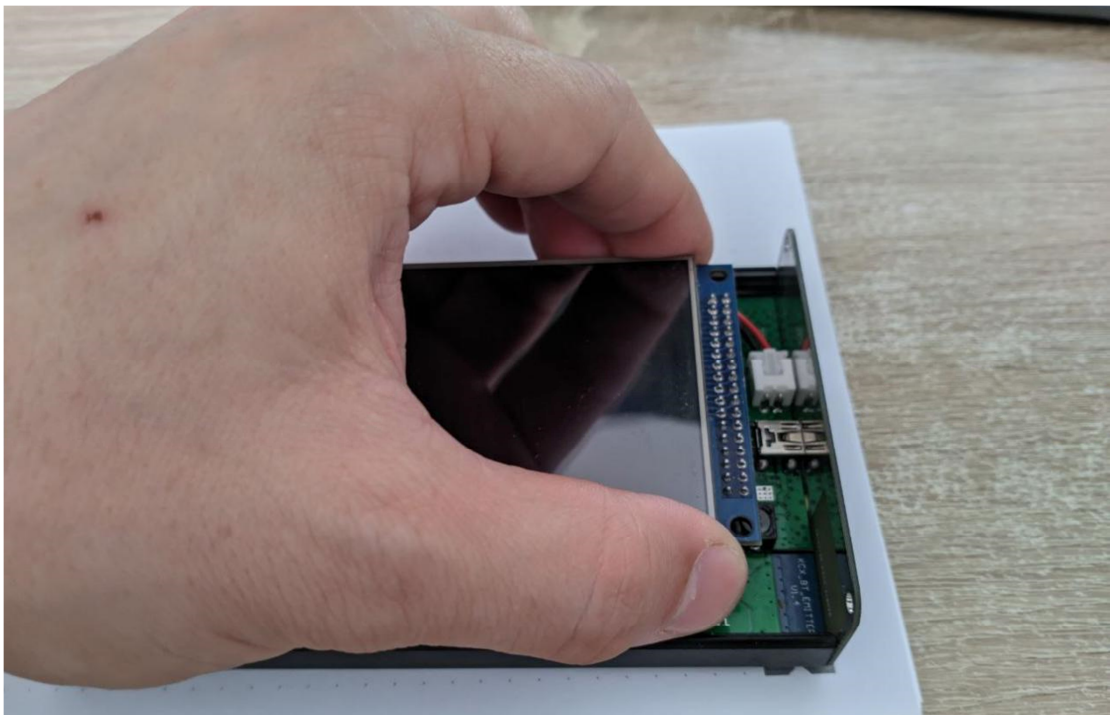


2. REMOVING THE BATTERY

On the end rectangular bars of the device, on both sides, unscrew 2 screws each from the side of the device screen. Remove the top cover by pulling it towards you



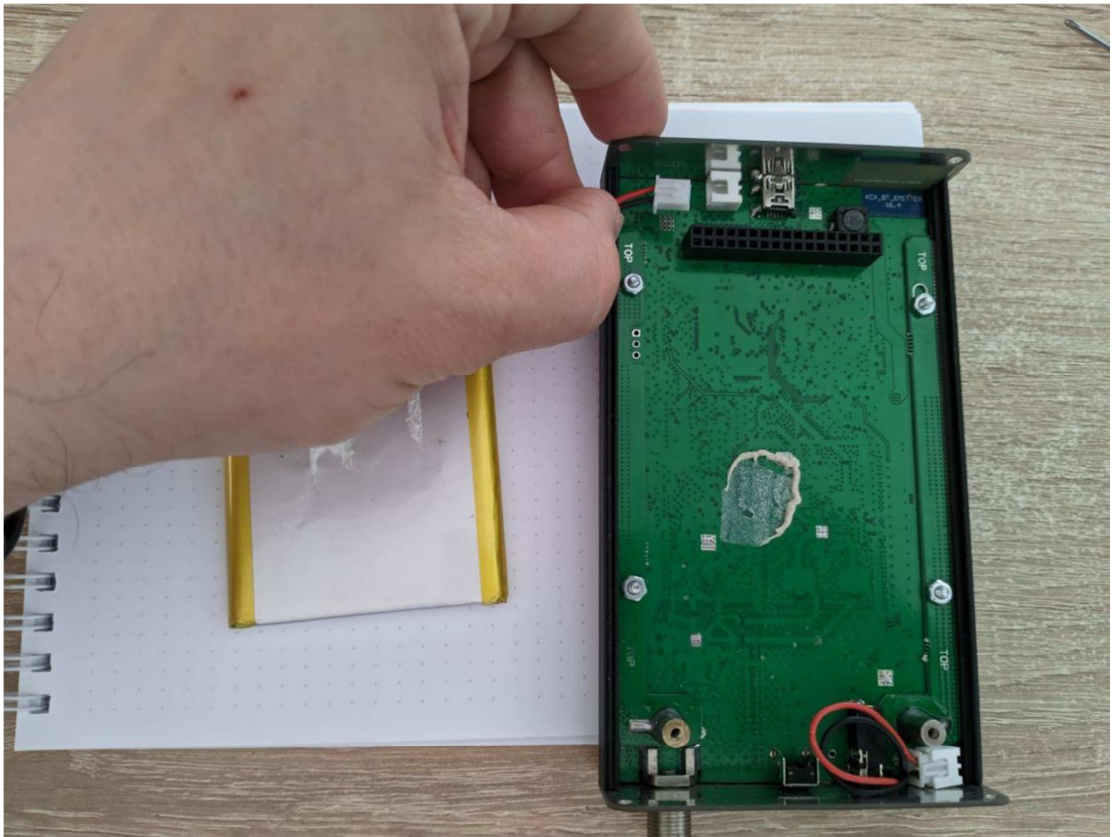
Unscrew the 2 shield fixing screws and hold the shield board on the solder pin side (opposite the round mounting holes), rock it outward and disconnect.



The battery is held on with adhesive tape. It can be removed by taking a flexible thin plastic plate (like a bank card) and moving it, placing the short side between the middle of the battery and the board.



Disconnect the power connector by pulling it out of the mating connector on the board.

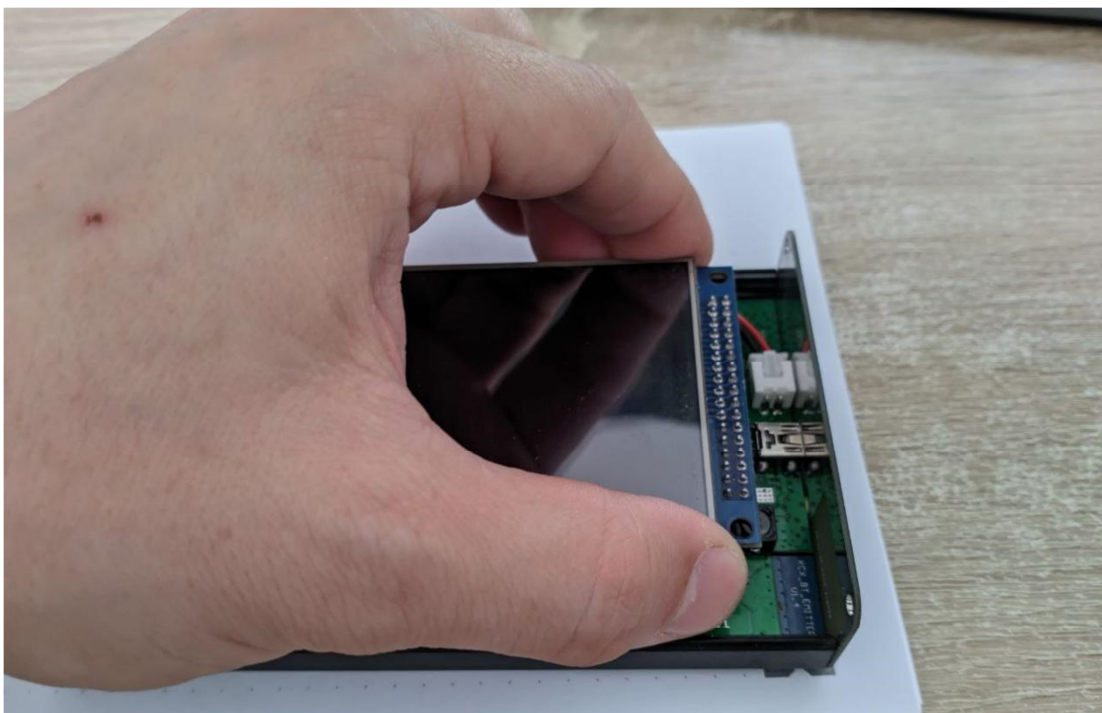


3. BATTERY INSTALLATION

On the end rectangular bars of the device, on both sides, unscrew 2 screws each from the side of the device screen. Remove the top cover by pulling it towards you.



Unscrew the 2 shield fixing screws and hold the shield board on the solder pin side (opposite the round mounting holes), rock it outward and disconnect



For a new device, the battery must be purchased separately - battery parameters are given in point 1. For the device after repair, use the old battery, but check for damage before installation. Peel off the protective layer on the adhesive tape, glue the battery evenly and assemble the device in the reverse order (connect the battery, install the screen, screw the top cover).